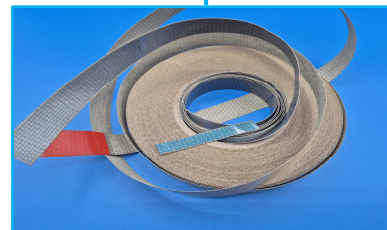
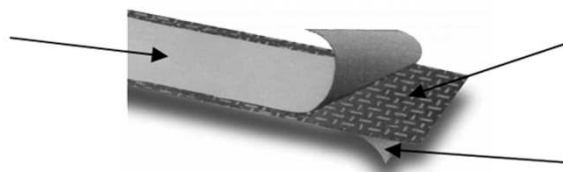


The PREMASQ is a conductive masking tape specially designed to create conductive areas of mass recovery or joints on cabinets, bays, metal cabinets... The advantage of PREMASQ is that it can be applied directly to the raw conductor without any pre-application. Due to the Copper Etamé material that constitutes PREMASQ, it results in a very high electrical conductivity and a high protection against corrosion. After cooking the paint, the mask is removed and leaves room for the conductive saving zone. The PREMASQ resists the temperatures of baking powder paints, as well as varnishing.



Mask to remove
after cooking
the painting



conductive tape

Installation adhesive

+ Technical characteristics

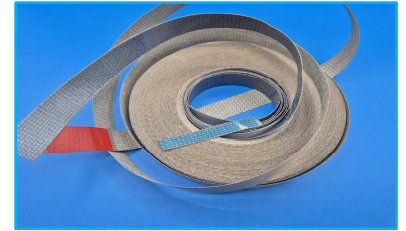
Features	Units	Values	Remarks
Material			
Basic material (tape)	/	Polyamide non-woven, tinned copper	
Mask material	/	Polyester + adhesive	Available without Mask
Adhesive material	/	Acrylic	Conductor
Standards Sizes			
Thickness	mm	0,27 - 0,30	
Standards Length	m	33	33 ml Standard
Width	mm	6 - 10 - 12,7 - 20 -25	With mask
Width	mm	8 - 10 - 20 - 38 - 50	Without Mask
General Properties			
Color	/	Gray	
Environnement	/	Corrosive	
Use Temperature	°C	- 30 à + 100	
Shielding efficiency	dB	55 dB à 30 MHz 80 dB à 10 GHz	According to MIL-Std-285
Surface resistance	Ω/\square	0.09 without mask 0.02 with mask	

+ General information

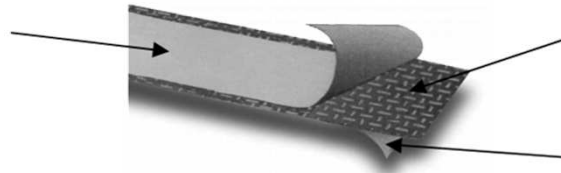
- The laying surface should be clean: free from grease, dust
- The drop surface should be as flat as possible!
- The tape must be compressed for 1 minute for optimal hold
- Available with and without mask
- Very high flexibility with increased tear resistance
- High protection against corrosion

The results were obtained under laboratory conditions and should be considered only as an indication. As AB2E has no control over its customers' equipment and many other factors, it is the user's responsibility to carry out its own tests to ensure that the product corresponds to its needs.

The tinned PREMASQ is a conductive masking tape specially designed to allow creating conductive areas for ground contact or joints on cabinets, racks, metal cabinets... The advantage of this tinned copper PREMASQ is to be able to apply it directly on the conductor support in raw state without any prior treatment. Due to the Tin-Coated Copper material that constitutes PREMASQ, it results in a very high electrical conductivity and a very high protection against corrosion. After baking the paint, the mask is removed and leaves room for the conductive sparing area. The PREMASQ is resistant to baking temperatures of powder paints, as well as varnishing.



Mask to remove
after cooking of
the painting



Conductive Tape

Installation adhesive

Technical characteristics

Features	Units	Values	Remarks
Base material (tape)	/	Tin copper foil	
Adhesive tape	/	Electrical conductor	
Elongation	%	5	
Dimensions			
Base Layer	µm	35	
Total Thickness With/Without Mask	µm	65 / 60	
Length	m	33	
Width	mm	6 - 8 - 10 - 12 - 15 - 20 - 25 - 30 - 50	
General Properties			
Color	/	Gris	
Environment	/	Corrosif	
Working temperatures	°C	155	
Shielding efficiency	dB	55 dB à 30 MHz 80 dB à 10 GHz	Norme MIL-Std-285
Surface resistance	Ω/□	0.003	MIL STD 202F

General information

- The deposit surface must be clean: without grease or dust
- The laying surface must be as flat as possible!
- The ribbon must be compressed for 1 minute for optimal holding
- Available with and without mask
- Very high flexibility with increased tear resistance
- High protection against corrosion

The results were obtained under laboratory conditions and should be considered only as an indication. As AB2E has no control over its customers' equipment and many other factors, it is the user's responsibility to carry out its own tests to ensure that the product corresponds to its needs.